
Wyoming Game Wardens

Conserving Wildlife – Serving People

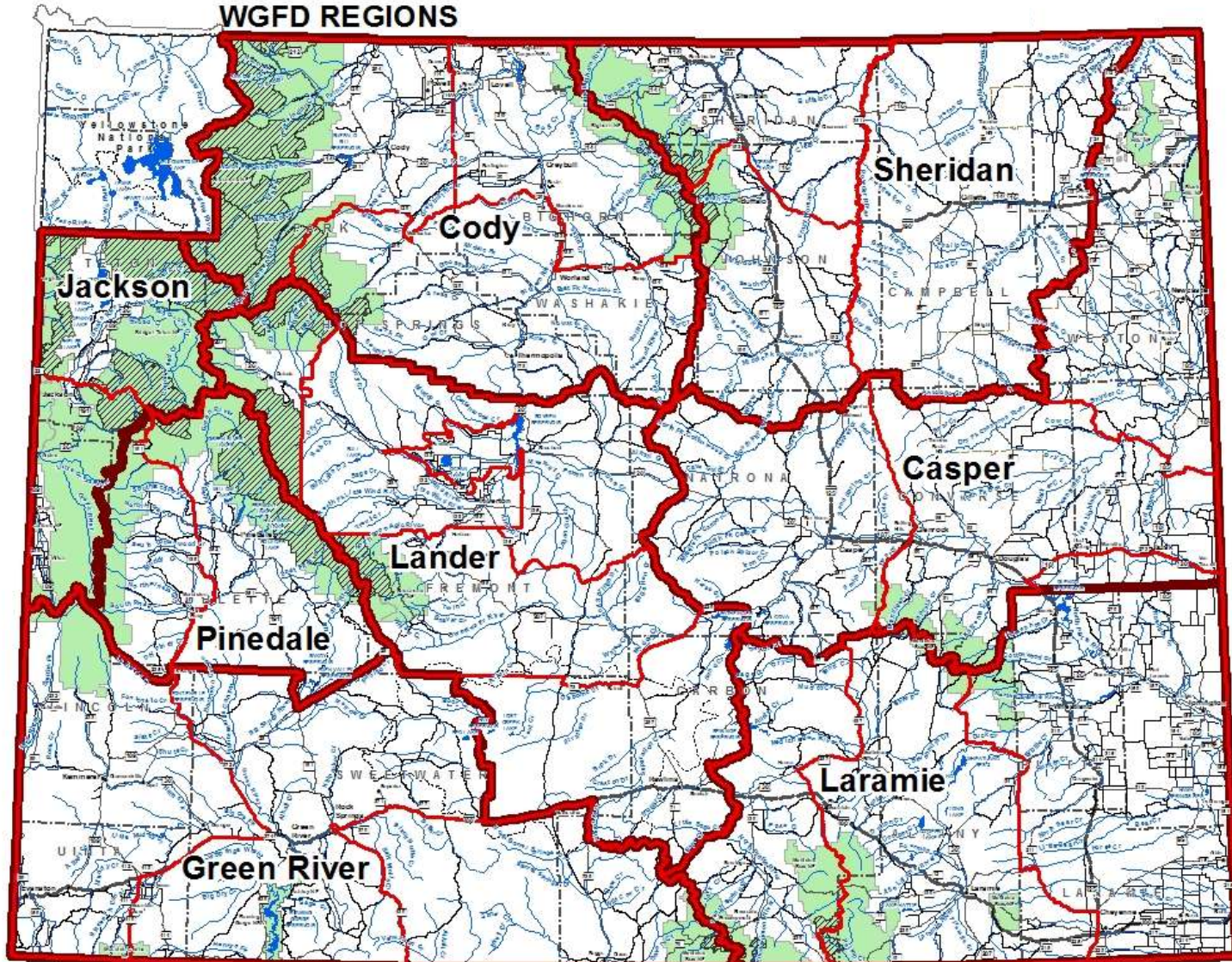




Why Wyoming?

- More wildlife than people
- Work in environments from alpine tundra to desert basins
- Utilize traditional methods and techniques using state-of-the-art equipment
- Work with an array of wildlife from grizzly bears to sharp-tailed grouse, nongame species from boreal toads to lynx
- Diverse job duties from classifying mule deer to checking boaters
- Highly regarded, well-respected personnel

WGFD REGIONS



Jackson Region (1)	Cody Region (2)	Sheridan Region (3)	Gr. River Region (4)	Laramie Region (5)	Lander Region (6)	Casper Region (7)	Pinedale Region (8)
Regional Wildlife Supervisor	Regional Wildlife Supervisor	Regional Wildlife Supervisor	Regional Wildlife Supervisor	Regional Wildlife Supervisor	Regional Wildlife Supervisor	Regional Wildlife Supervisor	Regional Wildlife Supervisor
Office Managers:	Office Managers:	Office Managers:	Office Managers:	Office Managers:	Office Manager:	Office Managers:	Office Managers:
Senior Game Wardens: So. Jackson No. Jackson Afton	Warden Coordinator	Senior Game Wardens: Kaycee Moorcroft Sheridan	Senior Game Wardens: Green River Kammerer Cokerilla Evanston Mtn View Rock Springs Baggs	Senior Game Wardens: N.Laramie S.Laramie Mad Bow Saratoga Elk Mtn	Senior Game Wardens: E. Rawlins W. Rawlins Lander S. Riverton N. Riverton Dubois	Senior Game Wardens: Lusk Newcastle Sundance East Casper W. Casper Douglas Glenrock	Senior Game Wardens: No. Pinedale So. Pinedale Big Piney
Game Warden: Alpine	Senior Game Wardens: Powell Lovell Greybull TonSleep Worldand	Game Warden: Sheridan Sheridan	Game Wardens: Green River Green River	Warden Coordinator: Wheatland	Game Warden: Lander	Game Warden: Casper Casper	Wildl. Mgmt. Coord.:
Wildl Mgmt Coord.:	Game Warden: Cody	Rep. Access Coordinator: Buffalo	Rep. Access Coordinator: Kammerer	Senior Game Wardens: Cheyenne Cheyenne HQ Torrington Wheatland	I&E Specialist:	Game Warden: Casper Casper	Wildl. Biologists: Pinedale
Feederland Manager:	Rep. Access Coordinator: Cody	Wildl Mgmt Coord:	Wildl Met Coord.:	Game Wardens: Laramie Laramie/Gleno	Wildl. Mgmt Coord.:	Rep. Access Coordinator: Casper	Habitat Biologist: Pinedale
Wildl. Biologists: Jackson Thayne	I&E Specialist:	Habitat Biologist: Gillette	Habitat Biologists: Green River	Reg. Access Coordinator: Laramie	Habitat Biologist: Lander	I&E Specialist:	Habitat Mitigation Biologist (AWEC):
Disease Biologist: Jackson	Wildl. Mgmt. Coord.:	Wildl. Biologists: Gillette Sheridan Buffalo	Wildl. Biologists: Mtn. View G. River Baggs	I&E Specialist:	Wildl. Biologists: S. Lander N. Lander Sinclair	Wildl. Mgmt. Coord.:	Disease Biologist: Pinedale
I&E Specialist:	Habitat Biologist: Cody	I&E Specialist:	I&E Specialist:	Wildl Mgmt Coord.:	Habitat Biologist: Casper	Habitat Biologist: Casper	Feeding Supvr:
	Wildl. Biologists: Worldand Greybull Cody			Habitat Biologist: Saratoga Wheatland		Wildl. Biologists: Newcastle Casper Douglas	
	Disease Biologist: Cody			Wildl. Biologists: Wheatland Laramie Saratoga			

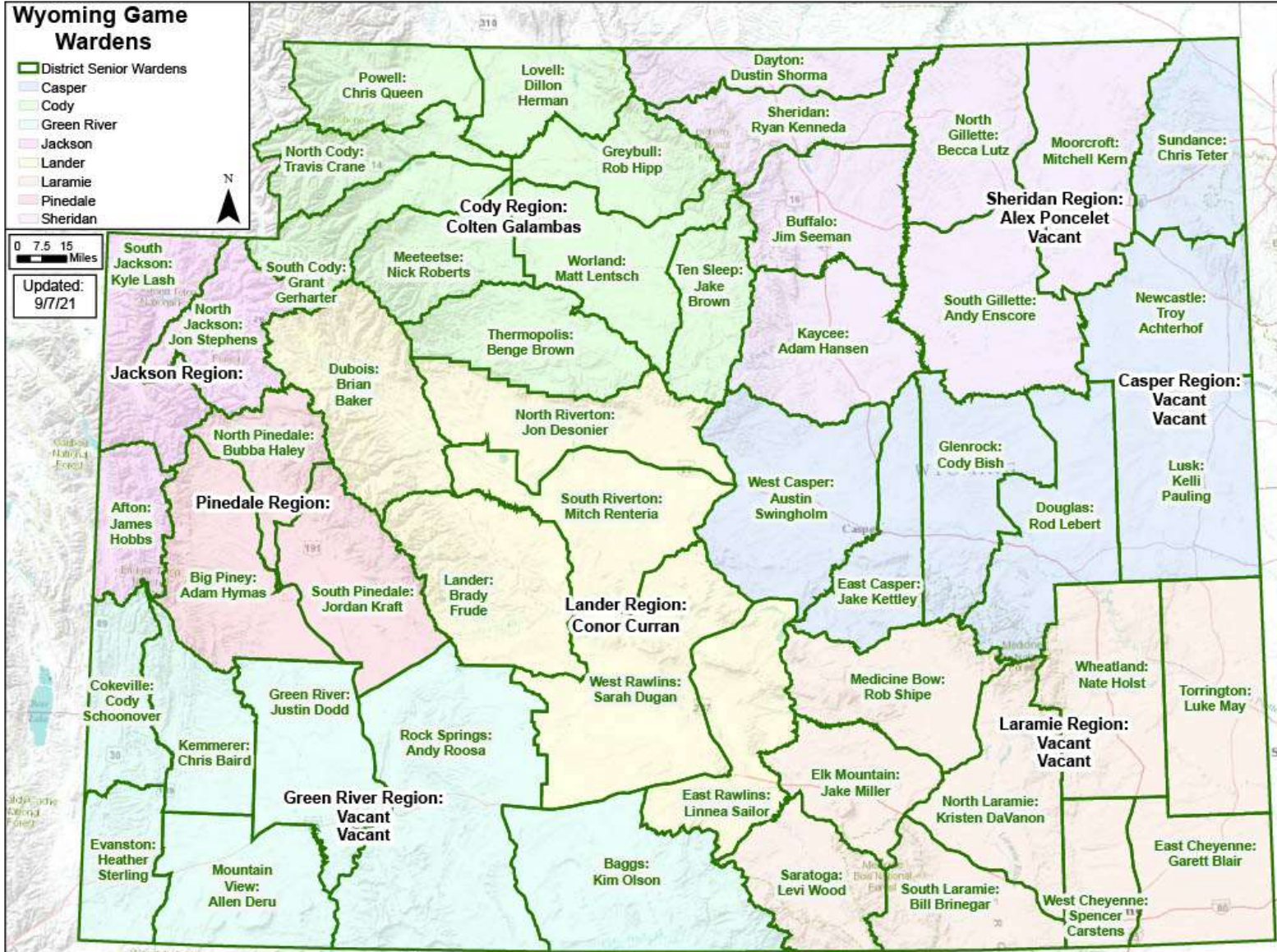
★ Game wardens with watercraft responsibility

Wyoming Game Wardens

- District Senior Wardens
- Casper
- Cody
- Green River
- Jackson
- Lander
- Laramie
- Pinedale
- Sheridan

0 7.5 15 Miles

Updated: 9/7/21





Entry-Level Game Warden Job Description

- Law enforcement with an emphasis on watercraft **(25-35%)**
- Wildlife management data collection/management decisions **(20-30%)**
- Wildlife conflict/damage **(15-20%)**
- Daily contacts with a wide variety of external constituent groups and internal Department employees **(10-15%)**
- Training and other miscellaneous duties **(5-10%)**



Law Enforcement/ Watercraft Safety

- Work independently or with other officers to enforce/check compliance with hunting, fishing, trapping and watercraft statutes and regulations as well as littering and state land camping, open fires and off/closed road travel restrictions.
- Write enforcement reports, attend court, work with other enforcement agencies, conduct investigations, and collect intelligence.
- Conduct courtesy watercraft safety and registration inspections along with HIN, VIN and AIS inspections.
- Carry and maintain law enforcement weapons and gear



Wildlife Management

- Collect/summarize wildlife data, from both ground and air, to determine distribution, abundance, recruitment, hunter harvest and mortality causes of wildlife.
- Work with senior wildlife biologists and senior game wardens on hunting season strategies and recommendations.
- Assist with trapping, collecting, and sampling wildlife for research projects and disease surveillance. Assist with the trapping and transplanting of wildlife.



Wildlife Damage and Conflicts

- Assist senior game wardens and senior wildlife biologists with wildlife damage issues to include investigations, data collection and delivering damage materials to mitigate conflict.
- Respond to and appropriately handle injured and nuisance wildlife calls which may require euthanization of wildlife. Use chemical and mechanical immobilization equipment and techniques when necessary and appropriate.



Public and Agency Contacts

- On a daily basis, develops and maintains effective working relationships and communicates/coordinates with Wyoming Game and Fish Department employees.
- Makes regular public contacts, both in the field and office setting, with landowners, sportsmen, boaters, public-at-large, conservation groups, government agencies and non-government organizations.
- Provide information and education on various wildlife topics and boating safety as well as the wide variety of other Department issues. Develop and present structured education and information programs related to watercraft safety and hunter education



Training

- Participate in law enforcement (including firearms and intermediate weapons), wildlife management, wildlife conflict resolution/damage, injured wildlife, immobilization of wildlife, equipment (motorized and non-motorized), dealing with the public and other training as assigned or deemed necessary.
- Required to attend and successfully complete/pass the Wyoming Law Enforcement Academy Peace Officer Basic.



Housing

- Game Wardens (entry level)
 - No Department housing provided
 - Assigned duty station is in a Regional Office and work is conducted within the region
 - Possibility of transfer to another region to expand knowledge base
- Senior Game Warden (SGW)
 - Assigned to specific warden district
 - Department-owned warden stations provided in some remote SGW locations
 - No housing provided in Casper, Cheyenne, Green River, Lander, Laramie, Sheridan



Opportunities for Advancement

- Senior Game Warden
 - Similar responsibilities as an entry level warden within a specific district
 - Broken down into 1/3 law enforcement, 1/3 wildlife management, and 1/3 public contacts
- Regional Access Coordinator
 - Administers the Access Yes Program to maintain and enhance public hunting and fishing, assists fellow wardens when necessary
- Wildlife Investigator
 - Handles more complex, long-term cases within each region



Minimum Qualifications

- A Bachelor's degree in wildlife management, range management, biology, zoology, ichthyology or other closely related field. Other Bachelor's degrees may be considered with at least 20 hours of wildlife-related coursework as evidenced on required transcripts.
- Must successfully complete a 14-week basic peace officer training course at WLEA and maintain a Wyoming peace officer certification as per the Wyoming Peace Officer Standards and Training requirements



Screening/Hiring

- Application
- Online Interviews
- LHQ and Background Forms
- In-Person Cheyenne Interviews
 - Polygraph Test
 - Law Enforcement Psychological Evaluation
 - Job Suitability Profile
 - Full Board Interview
 - Background Checks



Application

- Applications will open October 1st and close November 18th.
- Must submit a State of Wyoming application as well as transcripts with your application
- Those applications chosen to move on will be scheduled for Google Interviews



Online Interviews

- All documents will be reviewed to determine if you will be offered an online interview.
- Google Meets Interviews are about 20 minutes long with a 2-member panel consisting of Wildlife Supervisors and Senior Game Wardens



Polygraph Test

- Those selected to continue in the process will be required to submit additional documents, including a Life History Questionnaire, Background Questionnaire and Job Suitability Profile. All documents are reviewed and those candidates selected to proceed to the in-person interviews will be offered an opportunity to come to Cheyenne to complete the process.
- The veracity of this information is verified through a polygraph test once in Cheyenne.



Psychological Profile

- Psychological evaluation components include:
 - 3 psychological/personality tests
 - An interview with a board certified psychologist
 - Several of these components will be online before the in person interview



Full Board Interview

- Those who proceed past the polygraph and psychological profile move to a full in-person board interview.
- This interview is conducted with Wildlife Administration and various field personnel.
- If selected to continue, applicant will undergo various background checks.



Background Checks

- **Criminal History**
- **Credit History**
- **Previous employment (peers & supervisors)**
 - Conducted by WGFD Investigators, typically in person; some may be via telephone or mail
- **Family/Friends**
- **Prior Peace Officer Standards Training (POST) certifications**



Training

- Wilderness First Aid
- Stress Management Ethics
- Leadership Development
- Dealing with the Media
- Writing Workshop
- Dealing with Difficult People
- Law Enforcement
- Immobilization
- Watercraft
- Human/Wildlife Conflict
- Wildlife Management Workshops
- Basic Horsemanship and Desensitization



Equipment

- **Transportation**
- **Law Enforcement Gear**
- **Vehicle Equipment**
- **Specialized Equipment**



Transportation

- All Terrain Vehicle
- Boat (Depending on district)
- Camper (Depending on district)
- Horse (Up to 3, depending on district)
- Pickup (4X4, Domestic, 1/2 or 3/4 ton, depending on area/use)
- Personal Watercraft (Depending on district)
- Snowmachine
- Remote mountain cabins (Depending on district)



Law enforcement Gear

- ASP Baton
- Binoculars
- Duty Leather (Brown)
- Glock Handgun (22C, .40 S&W, 15 round magazines (3)
- Handcuffs
- AR-10 (.308, 20 round magazines (2))
- Oleoresin Capsicum Spray (Stream)
- Pocket Recorder
- Remington 870P Shotgun (12 gauge)
- Uniform (Reimbursement/Issued Item Allowance of \$500/year—includes Gore-Tex jacket/coat, boots, insulated coveralls, etc.)



Vehicle Equipment

- Cellular Phone
- Cold Weather Sleeping Bag
- Flashlight (Streamlight)
- GPS Receiver
- Metal Detector
- Portable Radio
- Spotting Scope w/ Window Mount
- Still Camera
- Winches (Bumper and/or headache rack)



Specialized equipment

- Night vision equipment/video cameras/remote cameras
- PIT tags/readers
- Unmarked vehicles
- Dog



Benefits

- Medical, Dental, Life and Vision Plans available with state contributions
- Peace Officer Retirement Program
 - Employees contribute 2.64% of pre-tax income, the state funds the remaining 26.8%
 - Employees become eligible for retirement once their age and years of service add up to 85 and must retire by 65
- Worker's Compensation
- Longevity Pay (every 5 years of service)



Already a Warden in Another State?

- Same process as entry level game wardens
(i.e. interviews, polygraph, psychological evaluations, background checks).
- Hired into entry level game warden position.
- Peace Officer Standards and Training (POST) certification
 - POST records are submitted to Wyoming POST for accreditation approval.
 - Warden completes the WLEA Challenge Exam/2-week academy training (instead of all 14 weeks).
- Openings for senior game warden districts are selected from entry level game wardens.
 - Game wardens with prior work experience have the ability to be extremely competitive for promotions to senior game warden, regional access coordinator, and wildlife investigator positions.



Interested in Applying?

- Send an email to wgf.wildlife@wyo.gov to express interest in the process or ask any questions you may have
- Visit wgfd.wyo.gov/game-warden-process for more information about the process